



Fairfield Road, London, E3

BUTLER  STAG



Simply stunning two bedroom fourth floor apartment set within the iconic Bow Quarter development with its host of outstanding resident amenities.



- Beautiful Two Bedroom Apartment
- Outstanding Resident Amenities
- Very Well Connected
- Part Furnished
- Within the Iconic Bow Quarter Development
- Stunning Shower Room
- Victoria Park and Roman Road Nearby
- Immediately Available

Bright, spacious and immaculately presented throughout, the property features a large reception room / semi open-plan kitchen with integrated appliances. Both bedrooms are doubles with plenty of wardrobe space and the principal bedroom is generously-proportioned with ample room for a desk / WFH setup. The apartment further benefits from a beautifully refurbished shower room and hallway storage.

Bow Quarter is conveniently positioned between Bow Road / Bow Church stations and Roman Road / Victoria Park. This wonderful development, with its beautifully manicured communal gardens and striking buildings offers residents 24-hour concierge service, an on-site convenience store and access to a leisure centre with a gym and swimming pool.

Offered part furnished and available immediately.

EPC Rating C
Council Tax Band E





Park Central Building

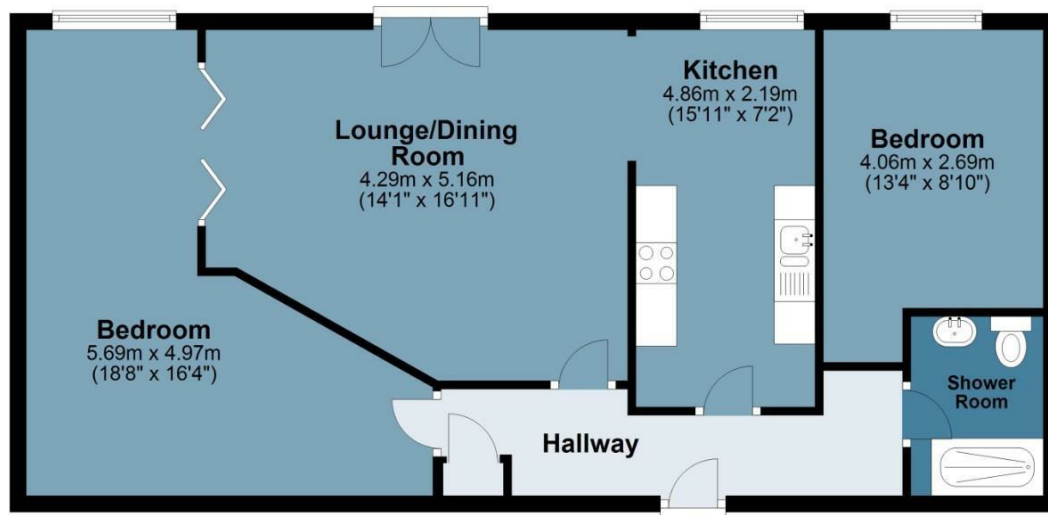
Approx. Gross Internal Area 71.3 Sq M (767.4 Sq Ft)

BUTLER & STAG



Fourth Floor

Approx. 71.3 sq. metres (767.4 sq. feet)



Measurements are approximate and for illustration purposes only. While we do not doubt the accuracy and completeness, we advise you conduct a careful independent assessment of the property to determine monetary value.
© @modephotouk www.modephoto.co.uk

IMPORTANT NOTICE - These particulars have been prepared in good faith and they are not intended to constitute part of an offer or contract. We have not performed a structural survey on this property and the services, appliances and specific fittings have not been tested. All photographs, measurements, floor plans and distances referred to are given as a guide and should not be relied upon.

BUTLER & STAG

☎ 020 8102 1236

🏠 508 Roman Road, Bow, London, E3 5LU

✉ bow@butlerandstag.com

www.butlerandstag.uk